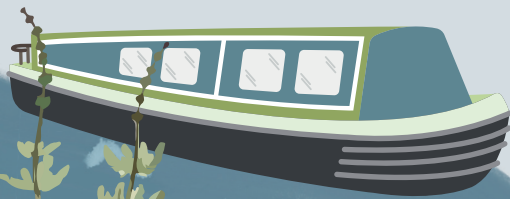


# The Bridgewater Canal Nature Trail

On your walk along The Bridgewater Canal,  
get creative along the canal towpath and  
hunt down our wildlife stencil stations!



# The Bridgewater Canal Map

There is so much to see and do along The Bridgewater Canal. Why not try and spot the below!

- Canal boat
- Bridge
- Cyclist
- Rower or paddleboarder
- Someone fishing
- Sculpture



*Fact!*

Did you know The Bridgewater Canal is home to 30 species of birds that use the hedgerows on the towpath as their home? How many can you spot?



*Fact!*

Even the bridges along The Bridgewater Canal are home to animals.

Often bats can be found hiding under them as they are cold and damp - perfect conditions!



# Discover the trails!

There are six trails to enjoy from Runcorn all the way through to Leigh. The Nature Trail beginning at Trafford Palazzo has an extra two stencil stations - this is a special route to celebrate our charity event The Bridgewater Way Walk in aid of The Christie.

Don't forget, you can always start at the end of each trail and work backwards - just don't forget to bring a couple of crayons for the stencil stations!

## Astley Nature Trail

Starting opposite the Old Boathouse Public House and finishing near RHS Garden Bridgewater.

Start: [///icicles.giant.afraid](http://icicles.giant.afraid)  
End: [///kingpin.buildings.shimmered](http://kingpin.buildings.shimmered)

Look out for Blackbird, Hedgehog and more. There are six wildlife stencil stations to find.



Scan this QR code and type in the **what three words** to pinpoint the start of the nature trail on to the map!

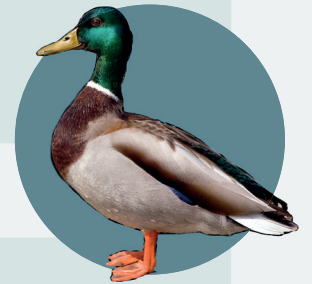
## Trafford Nature Trail

Starting at Trafford Palazzo and finishing at Cornbrook Metrolink.

Start: [///club.about.cove](http://club.about.cove)  
End: [///puppy.folds.glee](http://puppy.folds.glee)

Find Mallard, Wood Pigeon, Ladybirds and more. There are **eight** wildlife stencil stations to find.

Mallard



## Sale Nature Trail

Starting at Walton Park and finishing at North Quays Business Park.

Start: [///state.gears.hired](http://state.gears.hired)  
End: [///rushed.venue.tigers](http://rushed.venue.tigers)

Start your search for Frog, Willow, Badger and more. There are **six** wildlife stencil stations to find.

## Lymm Nature Trail

Starting at Lymm Village Bridge and finishing at Agden, near the Barn Owl Inn.

Start: [///shower.thinnest.warthog](#)  
End: [///plums.central.hedge](#)

Keep a lookout for Magpie, Mole, Snail and more. There are six wildlife stencil stations to find.

*Blue tit*



## Stockton Heath Trail

Starting at London Bridge Public House and finishing at Holly Hedge Lane, Moore.

Start: [///slick.marker.mouse](#)  
End: [///vote.visit.volume](#)

Discover Blue Tit, Buzzard, Frog and more. There are six wildlife stencil stations to find.

## Runcorn Nature Trail

Starting at Wat Phra Singh UK and finishing at Red Brow Lane, near Preston Brook Marina.

Start: [///launch.safely.snaps](#)  
End: [///pitch.broken.campfires](#)

Keep your eyes peeled for Woodpecker, Stag Beetle and more. There are six wildlife stencil stations to find.

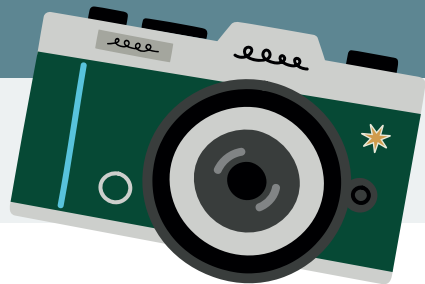
*Great Spotted Woodpecker*



# Bridgewater Canal Heritage!



This is one of the first pictures that was taken of The Bridgewater Canal!



## Stencil no. 1

It's time to rub a drawing at one of The Bridgewater Canal stencil stations!

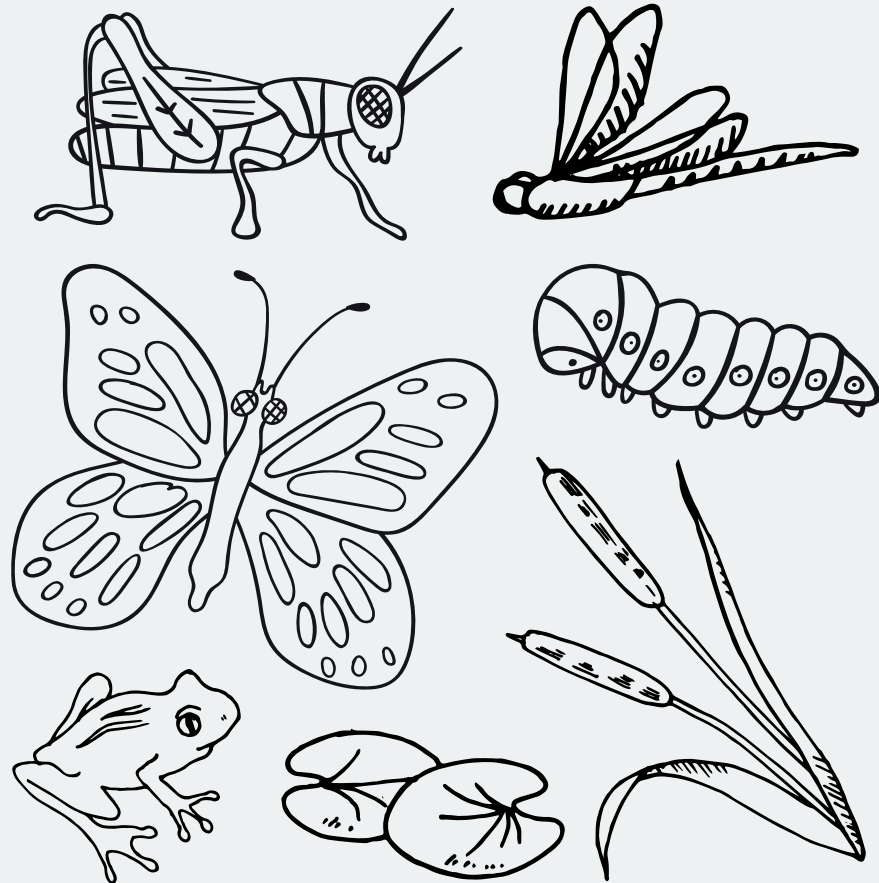


*Fact!*

Did you know when Queen Victoria visited The Bridgewater Canal in 1851, they tried to dye The Bridgewater Canal blue?

## Colouring in!

Colour in some creepy crawlies that can be found on The Bridgewater Canal!



Why not colour this in when you get home?

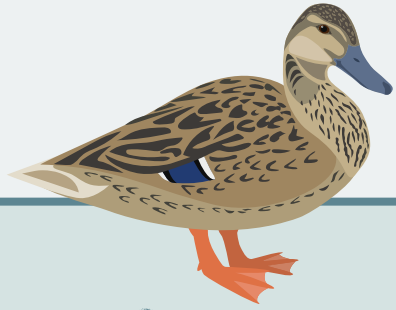
## Stencil no. 2

It's time to rub a drawing at one of The Bridgewater Canal stencil stations!



*Fact!*

Did you know canals and waterways play an important part in reducing the effects of climate change?



*Waddle you answer?*

How many eyelids does a duck have on each eye?



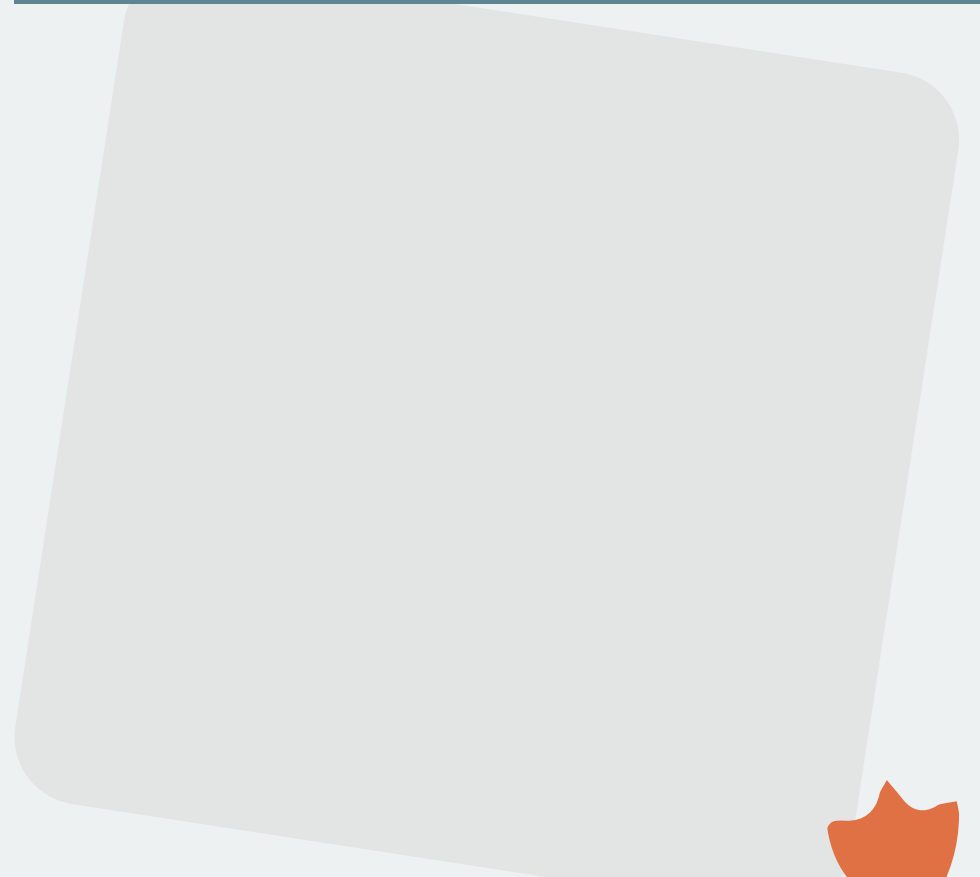
- A - One
- B - Three
- C - Six



Three

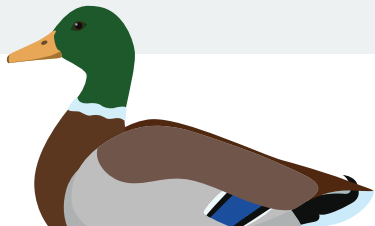
## Stencil no. 3

It's time to get quacking! Rub a drawing at one of The Bridgewater Canal stencil stations!



*Fact!*

Ducks are very social animals, they often stay together in groups! How cute!





*Pitter-patter!*

How many of these footprints can you spot on your walk?

Duck 

Goose 

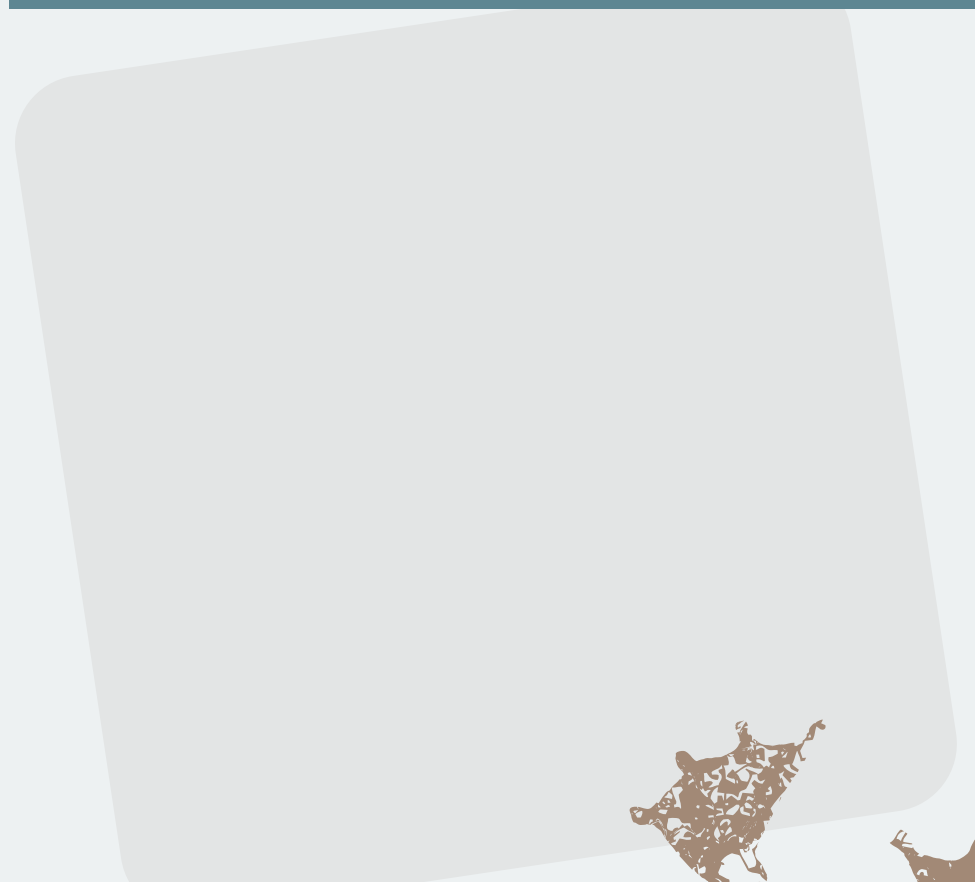
Dog 

Water Vole 



## Stencil no. 4

It's time to rub a drawing at one of The Bridgewater Canal stencil stations!



*Fact!*

Did you know there are 4,700 miles of canals and rivers across the UK?



## Colouring in!

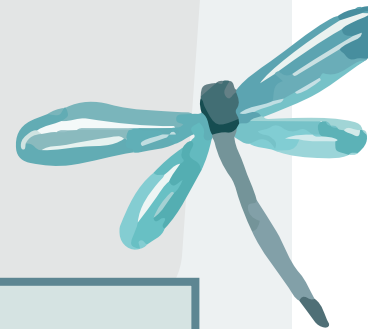
Dragonflies are known for their vibrant colours! What would yours look like?



Why not colour this in when you get home?

## Stencil no. 5

It's time to rub a drawing at one of The Bridgewater Canal stencil stations!



*Fact!*

Dragonflies can reach speeds of up to 35 miles an hour, that's as fast as a car! Zooom!

## Stencil no. 6

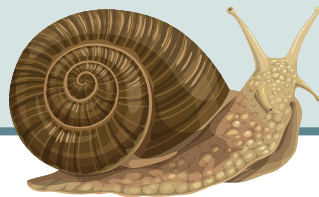
It's time to rub a drawing at one of  
The Bridgewater Canal stencil stations!



# Snailed it!

How many Mini Beasts can  
you spot?

- Ant
- Snail
- Worm
- Slug
- Millipede
- Ladybird
- Woodlouse



## Fact!

The Bridgewater Canal got its  
name after Francis Egerton  
the 6th Earl and 3rd Duke of  
Bridgewater was inspired to  
develop transport via canals!

## Bonus stencil no.7 - Trafford only

Keep a special lookout for The Christie stencil station!



Supporting

# The Christie

Charity

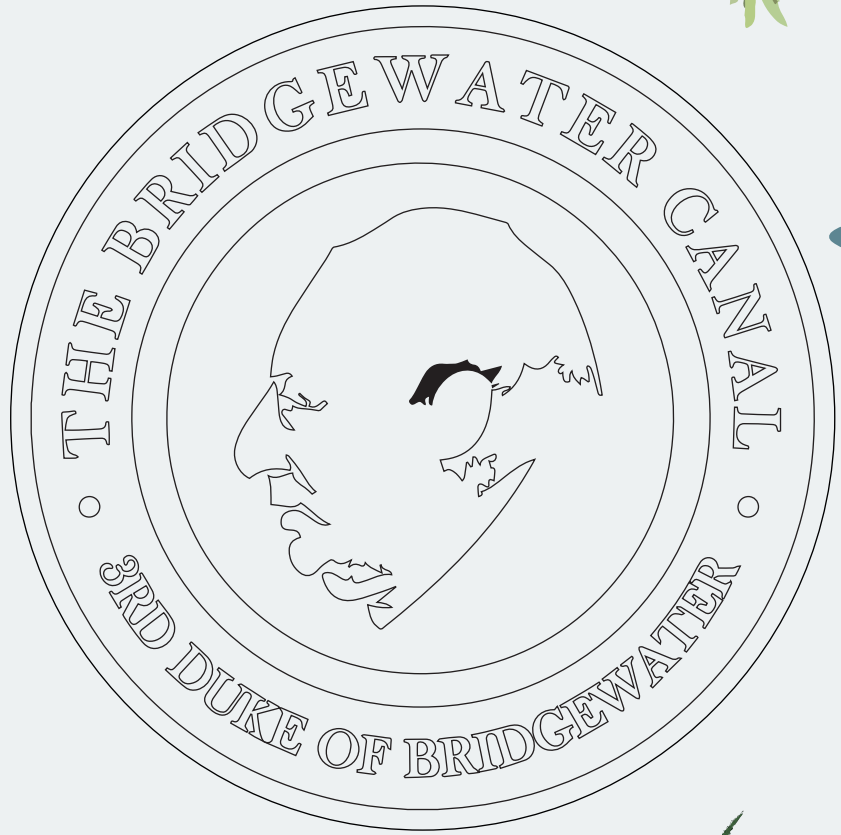
## Bonus stencil no.8 - Trafford only

One more to go...  
Are you a true Bridgewater Canal explorer?



*Fact!*

The Christie treats more than 60,000 cancer patients a year through their pioneering services.



*Colour me in!*

Upload a photo of your finished masterpiece and tag @bridgewatercanal for the chance to be featured!

#bridgewaternaturetrail





This Nature trail was created by Peel L&P to celebrate the first Bridgewater Way Walk in aid of The Christie, June 2023.

Funds raised from the walk went towards supporting the 'Bloods to Home' service, provided by Manchester's world-class cancer centre, The Christie NHS Foundation Trust.

For more information, please visit [bridgewatercanal.co.uk](http://bridgewatercanal.co.uk)

We hope you have enjoyed this trail, why not try another route?



100% Recyclable